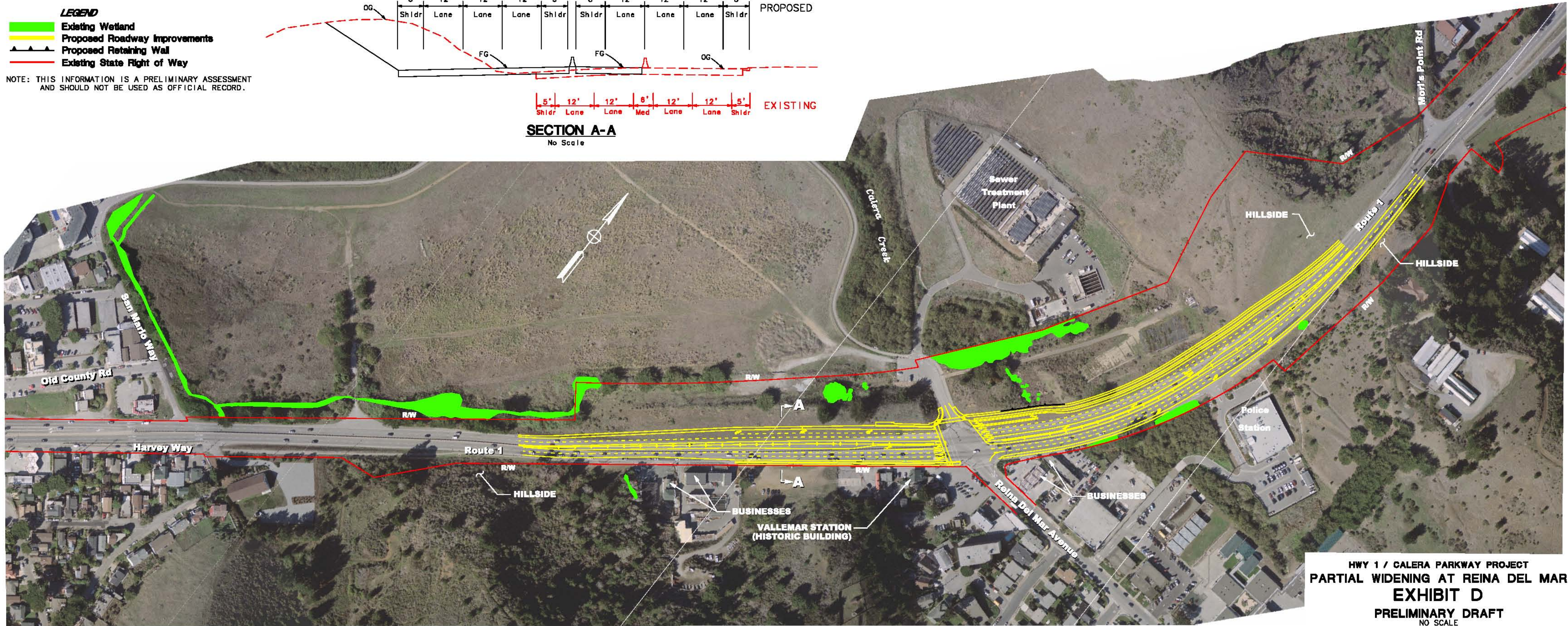
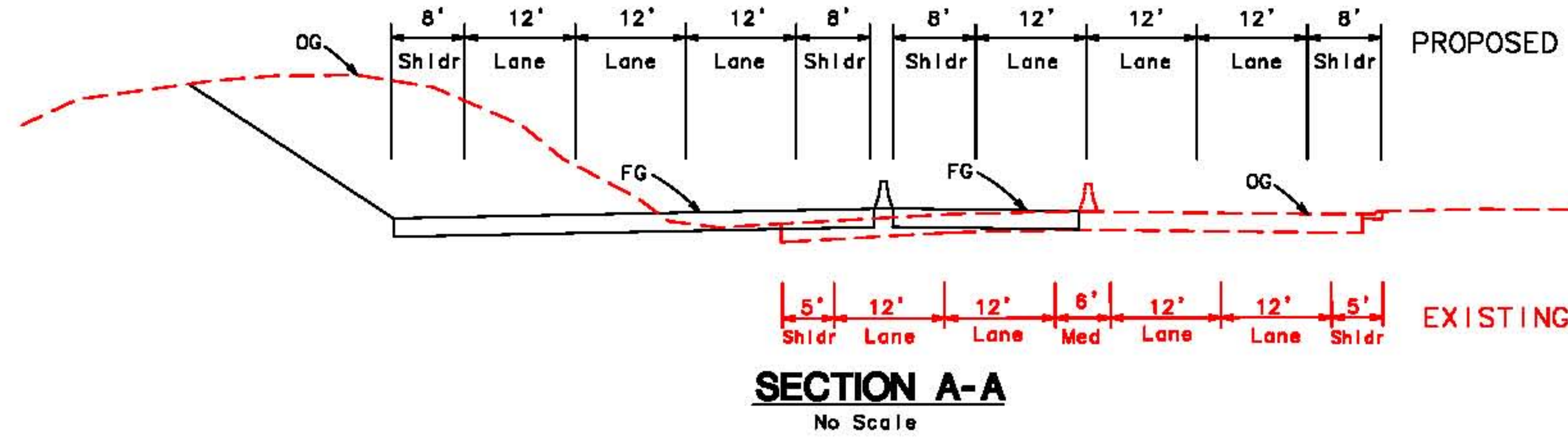


LEGEND

- Existing Wetland
- Proposed Roadway Improvements
- Proposed Retaining Wall
- Existing State Right of Way

NOTE: THIS INFORMATION IS A PRELIMINARY ASSESSMENT AND SHOULD NOT BE USED AS OFFICIAL RECORD.



HWY 1 / CALERA PARKWAY PROJECT
PARTIAL WIDENING AT REINA DEL MAR
EXHIBIT D
PRELIMINARY DRAFT
NO SCALE