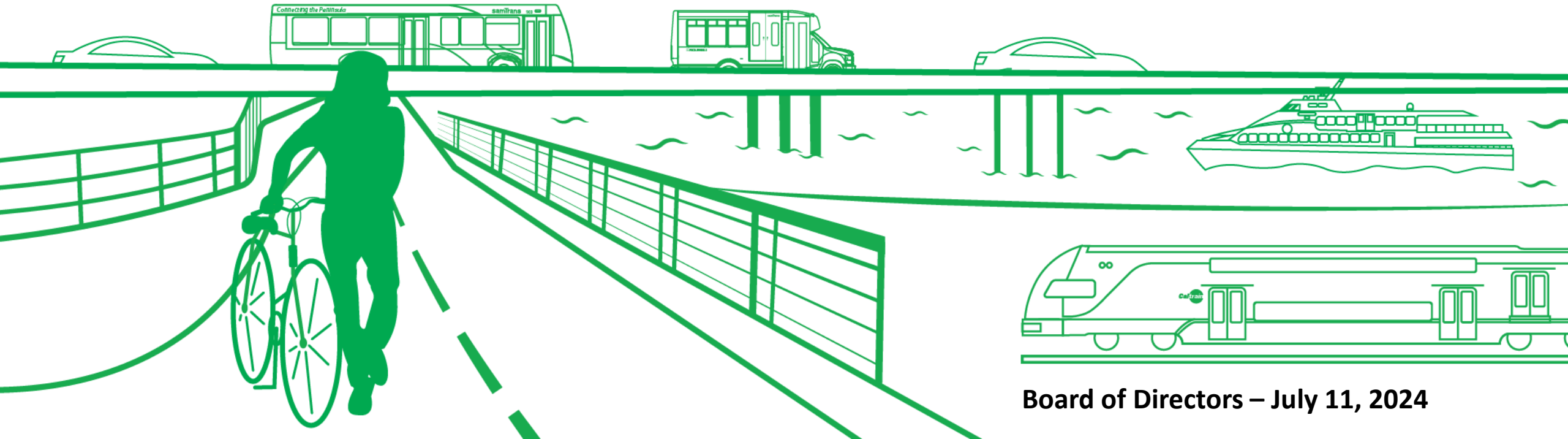




SAN MATEO COUNTY
**Transportation
Authority**

84/101 Reimagined Project

ROW Allocation Request



Board of Directors – July 11, 2024

Agenda

- Project Overview
- Benefits and Significance
- Cost and funding
- Request for ROW Allocation





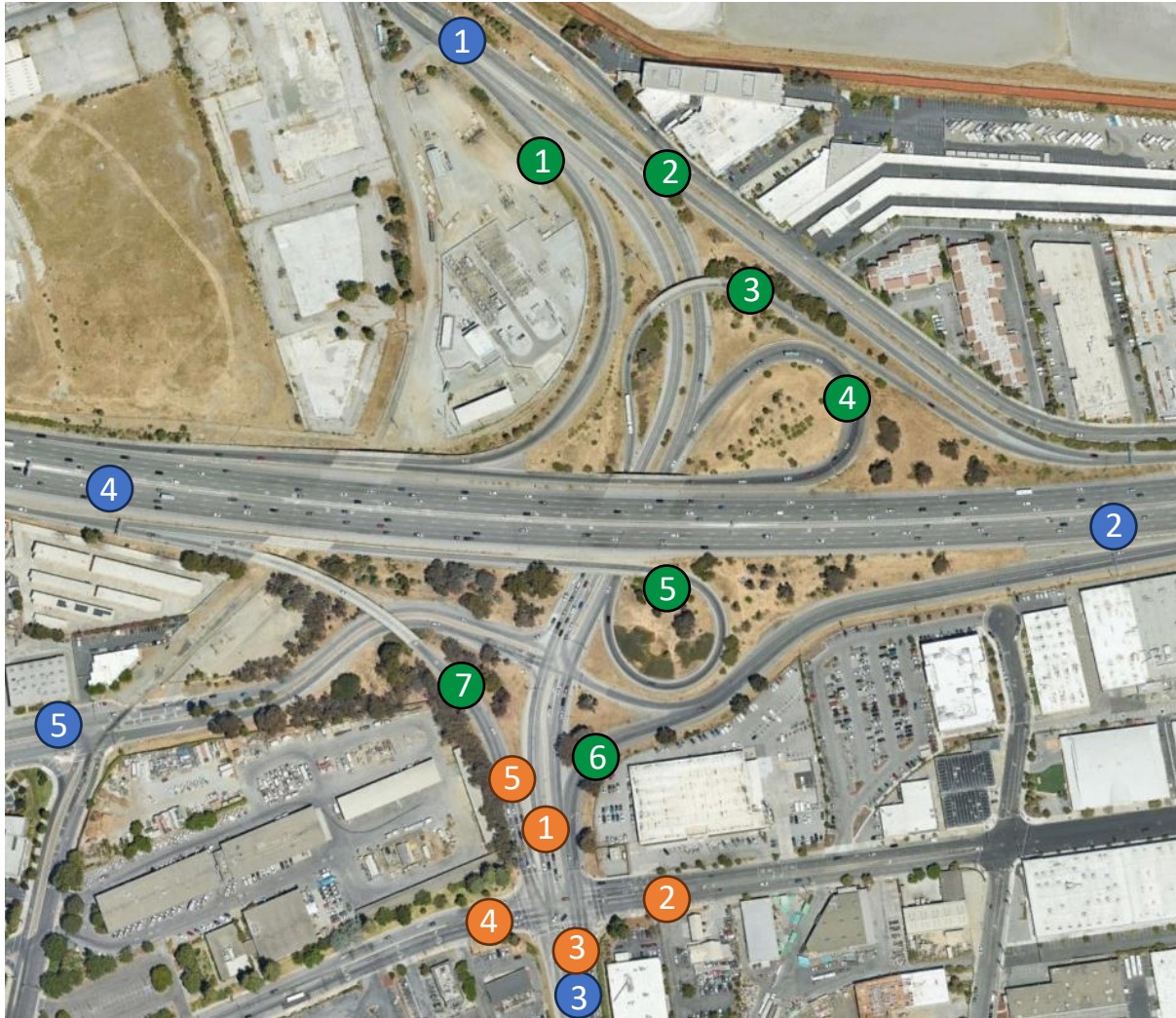
Project Overview



Existing



The Problem



- 5-legged Interchange
- 5-legged Intersection
- Multiple slip ramps
 - No bike or pedestrian facilities
 - History of rear-end collisions



Five-legged Intersection

- Woodside Road at Broadway



Existing Bike Network

- Limited Bike Facilities in Project Vicinity



Future

(simulation)





Benefits and Significance



Benefits

<ul style="list-style-type: none">• Significant Travel Time Savings	<ul style="list-style-type: none">• Continuous congestion relief throughout the day
<ul style="list-style-type: none">• Air quality improvements for Equity Priority Communities	<ul style="list-style-type: none">• Multi-modal connectivity including to future ferry
<ul style="list-style-type: none">• 4.2 miles of new bike/ped improvements vs. 0.8 miles of road improvements	<ul style="list-style-type: none">• Accident reduction for rear end, side swipe, broadside, and head-on collisions



Doorway to Port of Redwood City



Only deep-water port in South Bay



Serves SF to Silicon Valley



Intermodal freight movement



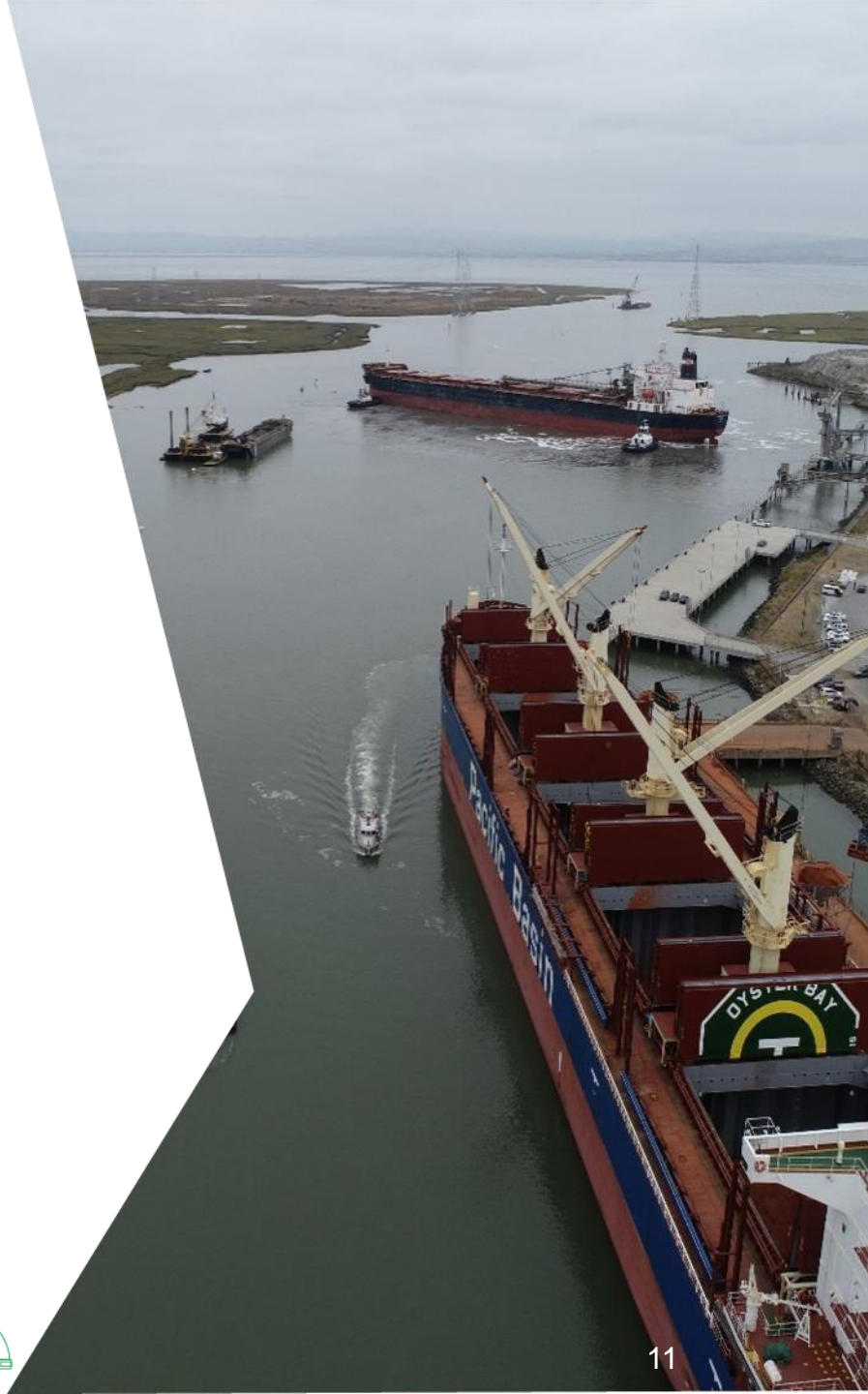
International trade: import and export



Future ferry terminal site



FEMA designated staging area





Project Cost and Funding



Project Cost

Phase	Amount (in Millions)
Project Development	\$2.2
Environmental Clearance	\$4.2
Plans Specifications and Estimates (PS&E)	\$16.3
Right of Way	\$69.7
Construction	<u>\$231.2</u>
Total Project Cost	\$323.6



Project Funding

Fund Source	Amount (in Millions)	Percentage
TA Measure A/W Highway Program	\$161.8	50%
Regional Measure 3 (RM3)	\$48.0	15%
State Transportation Improvement Program (STIP)	\$8.0	2%
Local Contribution	<u>\$48.0</u>	15%
Total Project Funding	\$265.8	82%
Funding Gap	\$57.8	18%



Federal and State Grants

Federal (applied)	State (upcoming)
<ul style="list-style-type: none">Rebuilding American Infrastructure with Sustainability and Equity (RAISE) - \$25M	<ul style="list-style-type: none">Trade Corridor Enhancement Program (TCEP) - \$33.1M
<ul style="list-style-type: none">Safe Streets and Roads for All (SS4A) - \$25M	<ul style="list-style-type: none">Local Partnership Program (LPP) - \$25M
<ul style="list-style-type: none">Multimodal Project Discretionary Grant (MPDG)/Infrastructure for Rebuilding America (INFRA) - \$105M	



Schedule

PHASE	Task	2023		2024				2025				2026				2027				2028				2029				2030	
		FY Q1	FY Q2	FY Q3	FY Q4	FY Q1	FY Q2	FY Q3	FY Q4	FY Q1	FY Q2	FY Q3	FY Q4	FY Q1	FY Q2	FY Q3	FY Q4	FY Q1	FY Q2	FY Q3	FY Q4	FY Q1	FY Q2	FY Q3	FY Q4	FY Q3	FY Q4		
Right of Way																													
Railroad Grade Crossing Improvements																													
Final Design (PS&E)																													
Construct																													



Request for ROW Allocation

- City has requested the TA Board consider allocating the previously programmed (2017) \$20.145 million for ROW Capital
- City has largely met the conditions for allocation
 - Final ROW maps are approved by Caltrans;
 - Acquisition cost estimates are updated with appraisals in accordance with industry standards; and
 - Met exceptions for fulling funding construction
- Staff concurs with the allocation request



Questions?

