



TA Board of Directors
Meeting of April 3, 2025

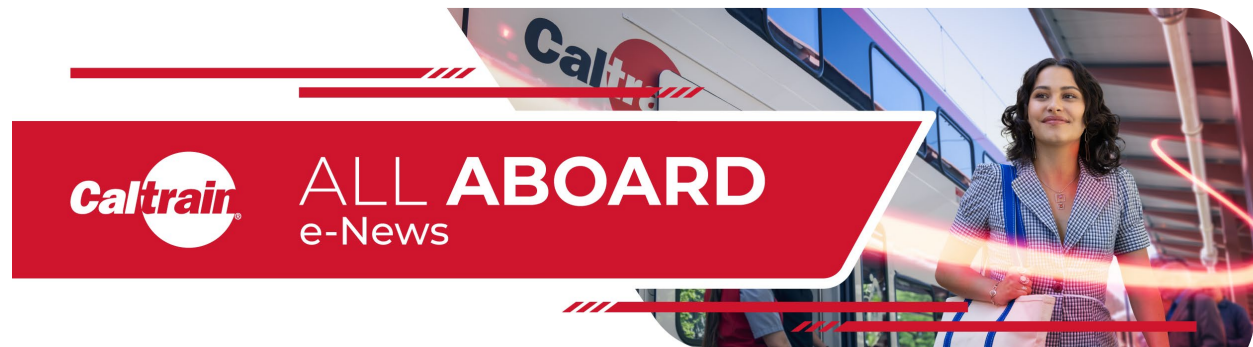
Correspondence as of April 2, 2025

Subject

1. Caltrain e-News – March 2025
2. City of SSF Letter - Request SamTrans Board to not Oppose SB-63
3. SF Chronicle - Permanent Traffic (including SM County)
4. SMDJ article on 101_92 Direct Connector project
5. C/CAG and SMCTA Creates Deadliest Road in Bay Area

From: [Dan Lieberman](#)
To: [Board \(@smcta.com\)](#)
Subject: Caltrain e-News - March 2025
Date: Monday, March 31, 2025 11:43:16 AM

ATTENTION: This email came from an external source. Do not open attachments or click on links from unknown senders.



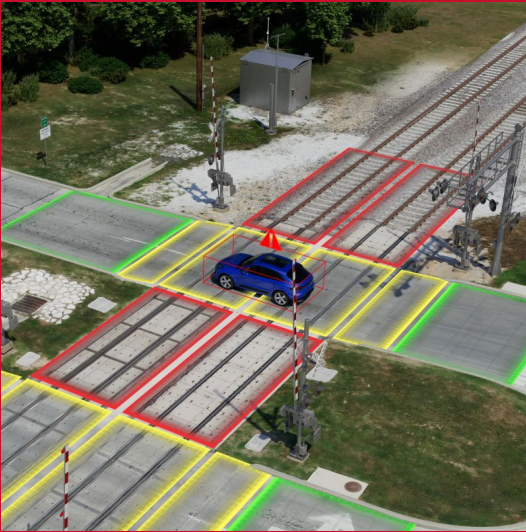
• March 2025 | [View online](#) •

New Technology Helps Caltrain Innovate and Improve

Baseball and soccer seasons are kicking as we celebrate Women's History Month, and at Caltrain, we're working to make your ride better every day no matter where you are going. Keep reading to learn more about recent safety enhancements in Palo Alto, new rider amenities in Redwood City and Sunnyvale, and of course, celebrating the start of the season for the San Francisco Giants and Bay FC. This month we also recognized the dedicated transit workers who keep Caltrain running—because behind every smooth ride is a team working hard to serve you.



New Safety Infrastructure at Grade Separations



With the installation of an AI-based system analyzing camera and LiDAR footage at Churchill Avenue in Palo Alto, plus solar delineators and new markings to help people navigate our railroad crossings more safely system-wide, Caltrain's corridor is becoming safer than ever.

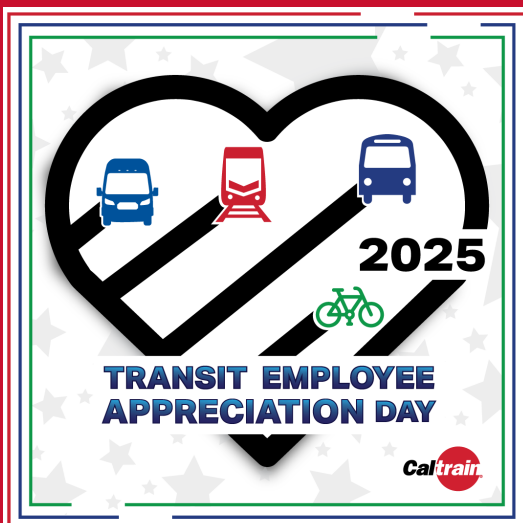
[Learn More about RailSentry](#)

Throne Brings Bathroom Access to Caltrain Stations

Sunnyvale and Redwood City Caltrain Stations have received an upgrade, with Palo Alto Station close behind as Caltrain partner Throne Labs install clean, modern and convenient public bathrooms.



[Learn More about Throne](#)



Happy Transit Employee Appreciation Day!

March 18 was Transit Employee Appreciation Day, marking the perfect opportunity to thank the hundreds of people that keep Caltrain and the Bay Area moving.

[Learn More about Transit Employee Appreciation Day](#)

Caltrain On Deck as Giants Season Gets Underway

Caltrain's service every 30 minutes is the perfect way for Giants fans to catch the action at Oracle Park.



[Learn More about Caltrain and the Giants](#)



Bay FC Kicks Off Season

Soccer fans! Take advantage of Caltrain service; Santa Clara Station is just a short walk from PayPal Park where Bay FC and The San Jose Earthquakes play home games.

[Learn More about Caltrain and Bay FC](#)

Caltrain Launches Climate Change Vulnerability Study

Winter storms? Summer heat waves? Have climate events affected your Caltrain trip? Take this survey and enter for a

chance to win a \$100 gift card.



Take the Survey!

••• Get ***All Aboard*** sent to your inbox | [Subscribe](#)•••

UPCOMING EVENTS

- April 3 - [Caltrain Board Meeting](#) - San Carlos Station
- April 8 - [US Women's National Team vs. Brazil](#) - Santa Clara Station
- April 22 - [Kylie Minogue](#) - San Francisco Station



Join our team!

- [Intern](#)
- [Senior Railroad Track Engineer](#)
- [Manager, Engineering Track and Structures](#)

Learn More about Job Opportunities at Caltrain



Forward *All Aboard* to your friends, so they can [subscribe](#) too!

Editor: Dan Lieberman

LiebermanD@Samtrans.com

Copyright (C) 2025 San Mateo County Transit District. All rights reserved.

Our mailing address is:
1250 San Carlos Ave. San Carlos, CA 94070

Want to change how you receive these emails?
You can [update your preferences](#) or [unsubscribe](#)

From: [Patea, Marie](#)
To: [Gee, Jeff \[jgee@redwoodcity.org\]](#); [Board \(@samtrans.com\)](#)
Cc: [Council-Only](#); [Ranals, Sharon](#); [Lee, Rich](#); [councilmemberrod@gmail.com](#); [kgonzalez@colma.ca.gov](#); [Medina, Rico \[rmedina@sanbruno.ca.gov\]](#); [afung@ci.millbrae.ca.us](#); [arak@cityofsancarlos.org](#); [Romero, Carlos \[cromero@cityofepa.org\]](#); [Board \(@smcta.com\)](#); [Mima Crume](#); [Charpentier, Sean \[scharpentier@smcgov.org\]](#)
Subject: City of SSF - Request SamTrans Board to not Oppose SB-63
Date: Tuesday, April 1, 2025 9:58:25 AM
Attachments: [image001.png](#)
[Sam Trans - not Oppose SB-63 3.31.25.pdf](#)

ATTENTION: This email came from an external source. Do not open attachments or click on links from unknown senders.

Dear Chair Gee:

Please see attached letter from Mayor Eddie Flores for your consideration.

Thank you,
MP



Marie Patea *(she/her)*
Executive Assistant to the City Manager
City Manager's Office | Administration
Direct: (650) 829-6666 | Cell: (650) 576-8670
400 Grand Avenue
South San Francisco, CA 94080
marie.patea@ssf.net



CITY COUNCIL 2025

EDDIE FLORES, MAYOR (DIST. 5)
MARK ADDIEGO, VICE MAYOR (DIST. 1)
JAMES COLEMAN, MEMBER (DIST. 4)
MARK NAGALES, MEMBER (DIST. 2)
FLOR NICOLAS, MEMBER (DIST. 3)

SHARON RANALS, CITY MANAGER

March 31, 2025

OFFICE OF THE MAYOR

Mr. Jeff Gee, Chair
SamTrans Board of Directors
1250 San Carlos Avenue
San Carlos, CA 94070

Dear Chair Gee:

Re: Request SamTrans Board to not Oppose SB-63

I am writing to you on behalf of the City of South San Francisco regarding the multicounty regional transit measure, Senate Bill 63, which has been introduced by State Senators Jesse Arreguin, D-Berkeley and Scott Weiner, D-San Francisco. This measure would place a half-cent, 10-year sales tax on the 2026 ballot to help fund some of the major regional transit agencies throughout the Bay Area. Although details of the measure have yet to be finalized, San Mateo County may be excluded if the County elects to opt out.

San Mateo County's Measure A, a half-cent sales tax for transportation projects within the County, is scheduled to expire December 31, 2033. Renewal of Measure A is also contemplated for 2026. Voter fatigue with transportation tax measures is a consideration that San Mateo County will weigh in its decision regarding opting out of SB-63.

As one of five cities in San Mateo County which host BART and/or Caltrain stations, including Daly City, Colma, San Bruno, and Millbrae, we are writing to communicate the profound importance that these services play in our communities. The 250 biotech businesses in South San Francisco contribute disproportionately to the property tax base of the County, functioning as one of the primary economic engines for the entire region. Our concentrated employment hub relies on frequent, reliable, and safe transportation options to thrive.

The renewal of Measure A is critically important but will not provide adequate support to these essential services. The City Council of South San Francisco urges that you do not oppose SB-63, in recognition of what is at stake should public transportation be forced to make major service cuts. The consequences would be far-reaching and harmful for commuters, residents, and tourists, as well as detrimental to air quality and congestion.

We urge the SamTrans board not to act in opposition to SB-63 and thank you for your consideration.

Sincerely,

Eddie Flores
Mayor, South San Francisco

Cc: Mayor Dr. Roderick Daus-Magbual, Daly City
Mayor Ken Gonzales, Colma
Mayor Rico Medina, San Bruno
Mayor Anders Fung, Millbrae
Carlos Romero, Chair, San Mateo County Transportation Authority
Adam Rak, Chair, C/CAG

From: [Mike Swire](#)
To: [Board \(@smcta.com\)](#); [cacsecretary \(@smcta.com\)](#)
Subject: SF Chronicle - Permanent Traffic (including SM County)
Date: Tuesday, April 1, 2025 12:39:42 PM
Attachments: [Rush hour is over in the Bay Area. Welcome to era of permanent traffic.pdf](#)

ATTENTION: This email came from an external source. Do not open attachments or click on links from unknown senders.

Dear TA Board and CAC members,

I thought that you might be interested in [this week's article on "permanent traffic" in the SF Chronicle](#). It discusses how Bay Area roads are full, *even before and after traditional "rush hour" times*. They mention terrible traffic between RWC and SFO after rush hour hours. They don't mention, however, that we recently widened 101 through much of this stretch. This experience aligns with JPA staff's comments at last month's CAC meeting that the recent widening of 101 in this corridor had not improved congestion.

I hope that we will continue to examine existing data on the failure of widening to improve congestion prior to making similar decisions in the future.

Sincerely,

Mike Swire

JUST IN

San Francisco

e-Edition

Account

Trending: Top 100 restaurants | Bipping | Beach creatures | Forecast shift | Sanctuary

BAY AREA

Rush hour is over in the Bay Area. Welcome to the era of permanent traffic

By **Rachel Swan**, Reporter

March 31, 2025

 Gift Article











Rush hour traffic, like on Highway 80 westbound between the University Avenue and Ashby Street exits in Berkeley, used to be common in the morning and evening commute times. But now these conditions are more common throughout the day.

Jessica Christian/The Chronicle



 Listen Now: Rush hour is over in the Bay A

1x

6:56

 Everlit

David Lovato remembers, in painfully stark detail, the night he hit his misery point with Bay Area traffic.

It was 7:30 p.m. on a Wednesday last October, well after what would traditionally be called “rush hour.” Lovato caught a shuttle

bus from his company in Mountain View, thinking he would zip up Highway 101 to San Francisco.

Instead, the bus spent 90 minutes plodding through gridlock that Lovato found mystifying.

ADVERTISEMENT

Article continues below this ad

“We crawled past Palo Alto, Redwood City and San Francisco International Airport,” he said. There was no sign of a car crash, a lane closure or a concert at Shoreline Amphitheatre. Peak commute hours were supposedly over. So where were all these drivers going?

Such questions have perplexed transportation experts in the Bay Area, many of whom observe a similar shift in traffic patterns — on freeways as well as public transportation. Rush hour, it seems, has transformed in an era of hybrid work. Workers who returned to

the office three days a week have found they are no longer tethered to their desks from 9 a.m. to 5 p.m. As a result, they come late, leave early, drive off to play pickleball during lunch, drive at night to grab a late dinner. Flexible schedules have upended the old paradigm of a morning and evening commute.

More For You

BART traffic remains in a hole. But it's worse at these stations



‘There is a real problem’: Bay Area legislators seek to prevent BART and Muni from unraveling



“Now it’s all day long,” said Adeline Ho of San Jose, who drove to San Francisco at noon for a tech conference last Thursday. Like other motorists, she has noticed the Bay Area becoming more like Los Angeles, where people are habituated to sitting and waiting on choked freeways.

What many commuters now experience is a more compressed “peak” — near bridge toll plazas on weekday mornings, or on a packed Tuesday evening BART train — and traffic interspersed throughout the day. Overall, transit is suffering while driving has rebounded: data from the Metropolitan Transportation

Commission shows that on Wednesdays at 9 a.m., the number of Bay Bridge crossings now exceeds 2019 levels, with a strong recovery at other hours.

ADVERTISEMENT

Article continues below this ad

On the roads, it feels like Bay Area traffic has reached a stage of permanent nuisance. It's relentless but unpredictable, swelling at random times. Still, the jams are not bad enough to nudge more people onto mass transit.

“People who commute, we’re Type A — we like to control things,” Donise Lewis of Oakland said as she walked out of a parking garage in downtown San Francisco. Despite the erratic nature of traffic, a driver “can still be in control.”

The new normal has created obvious challenges for public transportation systems like BART, which were built to

accommodate a 6-to-10 a.m. and 3-to-7 p.m. daily rhythm of travel into the city's downtown corridor. Officials at BART have tried, valiantly, to adapt.

One person who observed the rush-hour evolution early on was John FitzGibbon, BART's manager of scheduling and planning. In September 2023, he devised a plan to reconfigure the rail system's schedule, boosting service on nights and weekends and on the yellow line from Pittsburg/Baypoint — where rush hour crowds were most concentrated.

Since then, BART has seen riders gradually return on Tuesdays, Wednesdays and Thursdays, with a higher share of trips happening in the middle of the day than before the pandemic. That could be people running errands, or heading to the office at unconventional hours, agency spokesperson Alicia Trost suggested.

By last year, officials at BART and other transit agencies had grimly accepted the three-day work week, realizing there was little they could do to restore lost fare revenue on Monday and Friday. Labor contracts and the logistics of balancing a rail fleet prevent BART from more drastically reimagining its schedule, FitzGibbon said.

Even the 2023 service changes haven't lured back Lewis, who used to ride BART and now drives almost exclusively.

"I come to the city less often," she said, adding that she has become strategic, relying on navigation apps to find the secret routes — and small windows of time — with less congestion.

Other commuters struggle to acclimate to Los Angeles-style traffic.

"There's still a rush hour, but the edges have been smeared into other parts of the schedule," said Geoffrey Fowler of Oakland, who rides a motorcycle to work in Hayward. He said many of his co-workers arrive at 5 a.m. and try to leave by 1 p.m. "to make their drives a little more tolerable."

Stanford University economics professor Nicholas Bloom, who has extensively studied the ramifications of the three-day work week, said he's not surprised to see a staggered rush hour.

Companies' return-to-office policies "almost never stipulate" a daily schedule, so many workers arrive and depart at their convenience, Bloom said. Some attend meetings virtually from their kitchens in the morning, head to the office later, leave in time to pick their kids up from school and sign on again at night.

Technology platforms like Zoom and Slack have dissolved the barriers between work and home while enabling a new kind of lifestyle, said Abby Raisz, research director at the Bay Area Council business association.

“There needs to be substantial benefit to bringing people in” to the office, Raisz said. She cited recent surveys the council conducted that explain people’s reluctance to come back five days a week. Consistently, people point to the number of hours they waste commuting.

But a lot of the people who aren’t driving to an office or transit stop at 8 a.m. are still driving throughout the day. On sunny afternoons, Highway 13 in Berkeley snarls with day-trippers, said Eisso Mansvelt Beck, who has biked along that route to Joaquin Miller Park in Oakland.

Because work schedules are more elastic, people mix leisure activities into their day and spend more hours on the computer at night, Bloom said, referring to productivity data from Microsoft. Many workers leave their desks to play golf or hit the gym. Grocery stores that historically teemed with shoppers on Saturday mornings are reporting surges on weekdays as well. Among them is the Safeway on Jackson Street in San Francisco’s Financial

District, which had long lines last Tuesday evening, said Danny Snyder, a worker at the Exploratorium who stopped at the store on his way home.

All of these changes in behavior put more cars on the road at different times of day. Many people have simply adjusted their expectations. Nicolas Capera, who takes calls from home in Berkeley before driving to a job in San Leandro, said he has grown accustomed to the mid-morning slog on Interstate 880. He can't really remember what conditions were like before COVID.

Bloom wonders whether the whole idea of rush hour may become obsolete in 10 years anyway, if everyone has self-driving cars and traffic becomes significantly more efficient.

Not everyone embraces that vision of the future. Lovato, who doesn't own a car, converted to public transit after experiencing that late-evening jam in October. Ever since then, he has taken Caltrain to work, biking to and from stations to get exercise in between. He pities people who default to driving.

Chronicle staff writer Nami Sumida contributed to this report.

Reach Rachel Swan: rswan@sfchronicle.com

March 31, 2025

**Rachel Swan**

REPORTER



Rachel Swan is a breaking news and enterprise reporter. She joined the Chronicle in 2015 after stints at several alt weekly newspapers. Born in Berkeley, she graduated from Cal with a degree in rhetoric and is now raising two daughters in El Cerrito.

More For You



BAY AREA

California Forever plots big shift: A huge shipbuilding operation

California Forever is considering bringing a huge shipbuilding operation to Solano County amid a vow by President Trump to reinvigorate U.S. naval engineering.

TOTAL SF

The BART speedrun covers 50 stations and 131.2 miles of the Bay Area

COLLEGE ADMISSIONS

For UC and CSU applicants, nursing is the most competitive major

WINE, BEER & SPIRITS

Sierra foothills, historic California wine region, in peril

PERSONAL FINANCE

Hit the jackpot? Lottery winners must do this to make it last

Let's Play



Cross|word



Flipart



Really Bad Chess



SpellTower

Top

About

Contact

Services

Account

H E A R S T *newspapers* © 2025 Hearst Communications, Inc. [Terms of Use](#) | [Privacy Notice](#) | [CA Notice at Collection](#) |

[Your CA Privacy Rights \(Shine the Light\)](#) | [DAA Industry Opt Out](#) |

☒ [Your Privacy Choices \(Opt Out of Sale/Targeted Ads\)](#)

From: [Mike Swire](#)
To: [Board \(@smcta.com\)](#); [cacsecretary \(@smcta.com\)](#)
Subject: SMDJ article on 101/92 Direct Connector project
Date: Tuesday, April 1, 2025 12:47:57 PM
Attachments: [101 92 Direct Connect.pdf](#)

ATTENTION: This email came from an external source. Do not open attachments or click on links from unknown senders.

Dear SMCTA Board and CAC,

In anticipation of this week's update on the 101/92 Direct Connector initiative, I wanted to provide [the attached SMDJ article](#) on public sentiment in San Mateo regarding the project.

Sincerely,

Mike Swire

https://www.smdailyjournal.com/news/local/san-mateans-raise-concern-over-101-92-project/article_943d1d52-4317-11ef-b73d-5f2e965d34a6.html

FEATURED

From the Daily Journal archives

San Mateans raise concern over 101/92 project

People say plan's goal of reducing congestion is dubious

By Alyse DiNapoli, Daily Journal staff
Jul 16, 2024



Efforts to add a connecting lane between Highway 101 express lanes and State Route 92 was met with resistance from potentially impacted San Mateans, as the San Mateo County Transportation Authority discussed the project's status on

Thursday, July 11.

The highly-trafficked intersection largely comprises commuters heading to or from the San Mateo-Hayward Bridge. But State Route 92, primarily a one- to two-lane highway in each direction — at least on the Peninsula — is a congestion hot spot, and efforts on how to quell traffic at the interchange have been discussed on and off for about 10 years.

But the initiative would also involve acquiring over 30 parcels of private property via eminent domain, which stipulates that owners may have to sell their land under certain circumstances, provided it will be used for public use.

One of the impacted houses belongs to Karen Cutler, whose family has lived on the property for over 70 years. She said the project itself is short-sighted in that, without modifications to the San Mateo-Hayward Bridge itself, congestion leading up to the bridge would still abound, even with a connector lane.

“The disruption of lives of the 33 families that would be affected by Caltrans forcing them to sell their homes for a project that won’t help solve our traffic congestion should not be allowed,” Cutler said.

San Mateo Councilmember Rich Hedges and Danielle Cwirko-Godycki, San Mateo resident and City Council candidate, said they were concerned with the lack of transparency and property impacts this would have on many San Mateans.

“What I’d ask from you guys is more transparency and finding mechanisms to reach out to the community because I’ve walked around the area and some people know and some people don’t,” Cwirko-Godycki said during public comment. “These are

family homes that people inherit. These are people that are low-income, hard-working blue-collar folk that are barely making it so it's a really big deal, the idea that we might lose our property for a freeway.”

According to the July 11 staff presentation, the connector lane could be constructed to quell morning commute congestion by connecting the westbound portion of State Route 92 to both directions of the Highway 101 express lanes. Conversely, the lane could mitigate evening traffic by connecting the eastbound side to Highway 101's express lanes. A reversible lane is also a possibility, which would serve both east and westbound traffic, depending on the time of day.

Board Chair Carlos Romero surfaced some concerns held not only by nearby property owners but also transit advocates who have repeatedly argued that adding more lanes to freeways inevitably encourages more individual driving, rather than taking public transportation. Dedication significant investment in such a project should be focused on “reducing the number of vehicles and miles traveled by having more people in a car,” he said.

In response to public concern, he also added that there are examples of similar efforts, such as the Willow Road and Highway 101 interchange, where property-taking in East Palo Alto was raised as an option in the early stages but ultimately did not occur.

“There is opportunity to address many of the questions that are here. I can understand very clearly how people feel about takings in their property,” Romero said. “We certainly tried to address that in East Palo Alto when we were looking at the Willow Road widening, which has now worked and we are all pretty much satisfied with the way it worked out.”

The environmental review phase is estimated for completion around 2026, with construction occurring no sooner than 2029, according to staff.

alyse@smdailyjournal.com

(650) 344-5200 ext. 102



MORE INFORMATION



92/101 connector lane effort resumes

Plans proceeding for 101/92 interchange congestion remedy

Don't ignore local traffic safety needs

Alyse DiNapoli, Daily Journal staff

Daily Journal staff

[Learn more about your privacy options](#)

From: [Public Comment](#)
To: [Board \(@smcta.com\)](#)
Subject: FW: C/CAG and SMCTA Creates Deadliest Road in Bay Area
Date: Wednesday, April 2, 2025 3:40:00 PM

-----Original Message-----

From: Malcolm Robinson <calmotomal@gmail.com>
Sent: Wednesday, April 2, 2025 3:39 PM
To: Public Comment <publiccomment@smcta.com>
Subject: C/CAG and SMCTA Creates Deadliest Road in Bay Area

[You don't often get email from calmotomal@gmail.com. Learn why this is important at <https://aka.ms/LearnAboutSenderIdentification>]

ATTENTION: This email came from an external source. Do not open attachments or click on links from unknown senders.

>
> In America #1 is what people excel towards, usually. C/CAG and the SMC TA have combined to create El Camino Real, the Deadliest Road in the Bay Area according to Bay Area News Group's analysis of local safety data between 2002-2022. What can we do about making it safer on our main thoroughfares?
>
> Vision Zero, created in Scandinavia to bring pedestrian and bicycle safety to the forefront of infrastructure planning has been working, in other places. SMC TA instead first gave us Plan 2050, a.k.a. NOT in my lifetime will it be safe on our streets. This plan morphed into Local Road Safety Plan. Zero Deaths was too much of a stretch?
>
> This week's SMC TA agenda has more freeway building, a few more hundreds of millions of our tax dollars on faster automobile transport. Just like last month's agenda, just a different freeway project. Folks, you're killing us. Please make it safer on our streets, all over San Mateo County. After all, Equity should be more than a campaign slogan.
>
> PS Thanks for the new Pedestrian Safety sign at northbound CA-1 Grey Whale Cove state park. I guess the crosswalk SMC TA budgeted for could not work. The sign is a help.
>
> Please continue to make public transport effective, efficient, and safe. Thanks in advance for your assistance.
>
> Rgds,
>
> Malcolm Robinson
>
> Sent from my iPad