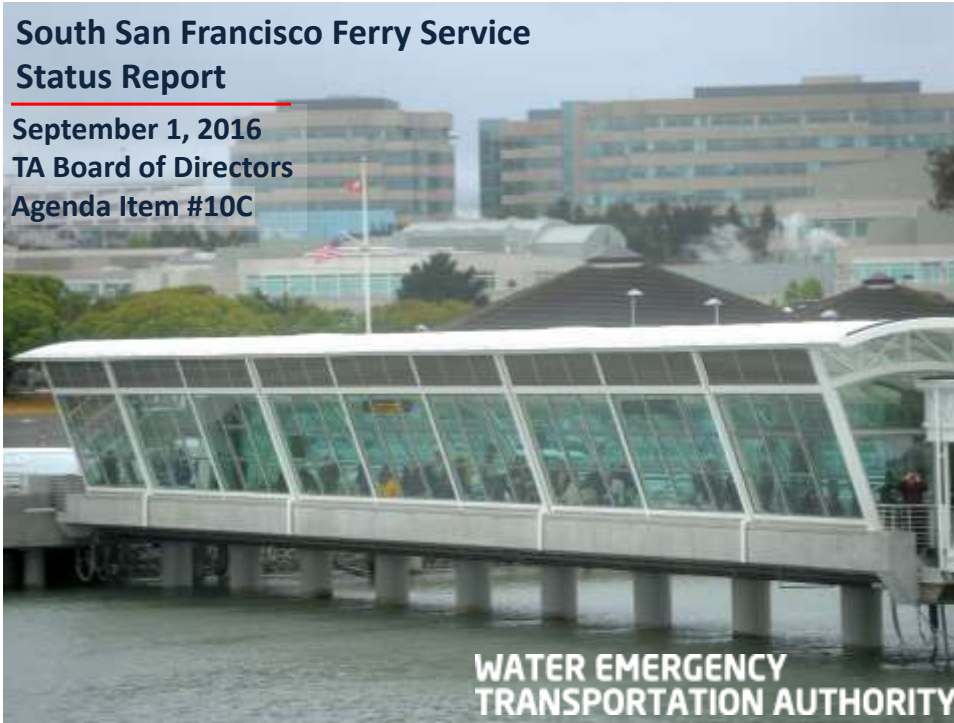


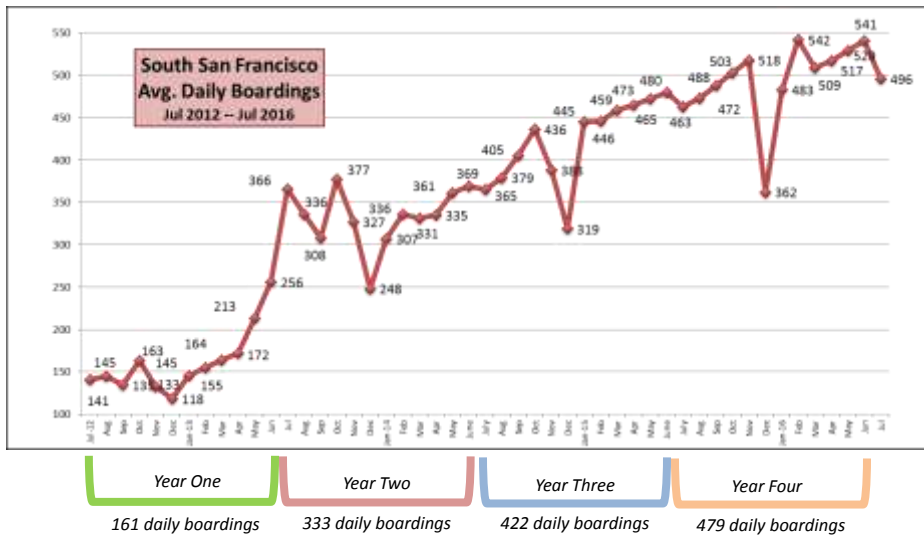
South San Francisco Ferry Service Status Report

September 1, 2016
TA Board of Directors
Agenda Item #10C

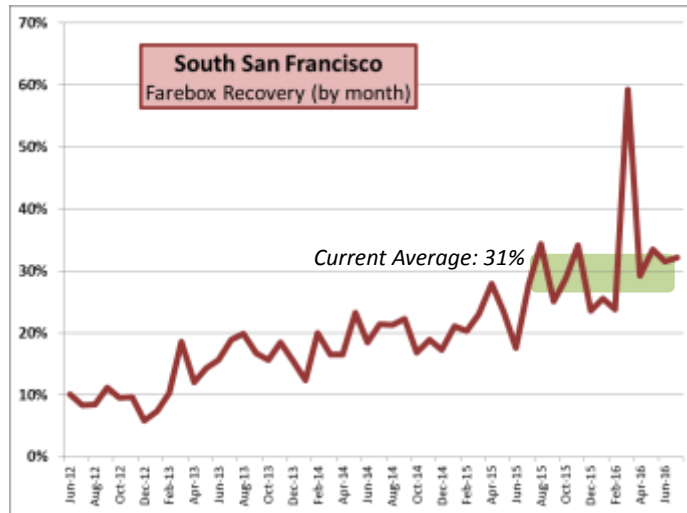


WATER EMERGENCY
TRANSPORTATION AUTHORITY

Average Daily Ridership, South San Francisco Ferry Service



Average Monthly Farebox Recovery



3

Regional Measure 2 Program: Performance Criteria

- Project has two years of ramp up and must reach threshold farebox recovery by the third year

Service Type	Ferry	Rail	Bus
Peak Service	40%	35%	30%
All Day Service	30%	25%	20%
Owl Service	N/A	N/A	10%

- Services that do not meet above thresholds in Year 3 must complete a Corrective Action Plan and submit to MTC for approval
- Ferry services are evaluated as individual routes, and not part of a larger system or program of services

4

WETA Board Ridership Development Actions

WATER EMERGENCY
TRANSPORTATION AUTHORITY

July 2012

- South San Francisco Ferry service begins

April 2013

- Ridership enhancement program
- Additional evening trip, adjustment to peak schedule
- Rider and Commuter surveys
- Midday service
- Marketing enhancements
- Increase of \$228,000 annual operating expense

November 2013

- Status report
- Follow up surveys



5

WETA Board Ridership Development Actions

WATER EMERGENCY
TRANSPORTATION AUTHORITY

May 2014

- Made permanent April 2013 schedule changes
- Employee Transportation Coordinator events

September 2014

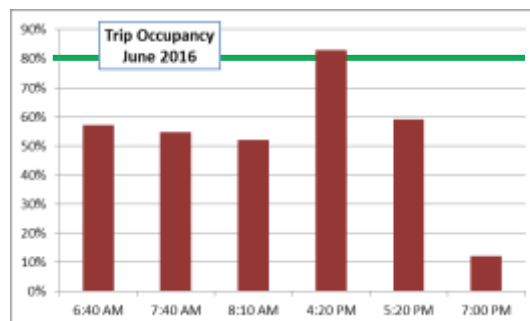
- Fare program adoption
- Increased fare by 6%

October 2014

- Systemwide onboard passenger survey

April 2015

- Summer schedule
- Modified evening departure



6

WETA Board Ridership Development Actions

WATER EMERGENCY
TRANSPORTATION AUTHORITY

September 2015

- WETA submits MTC Corrective Action Plan

MTC Corrective Action Plan – September 2015

1. Monitor and adjust service to maintain ridership growth
2. Continue outreach to South San Francisco employers
3. Encourage modification and expansion of connecting shuttle program
4. Continue midday excursion trips to San Francisco
5. Interline crews and vessels
6. Work with MTC to modify Regional Measure 2 performance criteria for WETA Ferry Program

Proposed modification 1

Extend ramp-up period for ferry capital projects from 3 years to 10-14 years

Proposed modification 2

Evaluate WETA services as a system rather than individual, independent services

7

WETA Board Ridership Development Actions

WATER EMERGENCY
TRANSPORTATION AUTHORITY

September 2015

- WETA submits MTC Corrective Action Plan

Fall 2015

- Letters of support from South San Francisco ferry stakeholders
 - San Mateo Transportation Authority
 - SAMCEDA, Bay Area Council
 - Commute.org
 - City of South San Francisco
 - City of Alameda
 - Master's Mate's & Pilots
 - Supervisor Pine

May 2016

- MTC extends ramp-up period to June 2019

June 2016

- Service hits 541 average daily boardings



8

Upcoming South San Francisco Development

No.	Project Name	Project Description	Area (sq ft)	Investor	Agreement Status	Open by...
1	Genentech					2015
2	Britannia					2016
3	Marriott F					2017
4	Terrabay S					2017
5	213-221 East Grand Ave	Office R&D, 9-story building, 6.2 acre site	291,000	ARE-SF No 21	pending Approved December 2008,	2018
6	494 Forbe					2022
7	Britannia					2022
8	Gateway					2022
9	850-900 G					2022
10	BioMed Realty	Office R&D, 24-story buildings	262,287	BMR	Agreement Draft EIR Completed	2025
11	Oyster Point Specific Plan	Office/R&D, 82 acres	2,300,000	SKS Investments	Approved March 2011, 20-year Development Agreement	2031

3.5 million square feet of Office/Commercial space currently under construction

Source: City of South San Francisco

2.5 million square feet of Office/Commercial space anticipated in Oyster Point

Source: City of South San Francisco

